

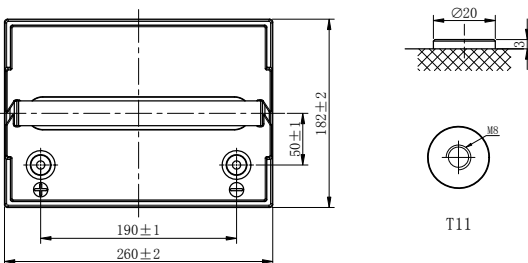
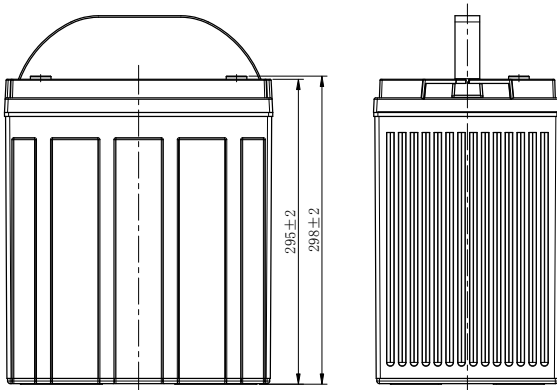
# INCOMPARABLE DEEP CYCLE AGM BATTERY

LDC8-210-GC8H (8V210Ah)



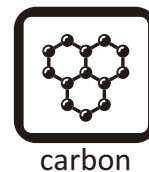
## CHARACTERISTICS

Item	Specifications
Voltage	8V
Dimension	Length 260mm (10.2inches)
	Width 182mm (7.17inches)
	Container Height 295mm (11.6inches)
	Total Height 298mm (11.7inches)
Approx Weight	40.5kg (89.3lbs)
Terminal	T11(M8)
Container Material	ABS
Reserve Capacity	25A 480min
	56A 175min
	75A 145min
Capacity	20HR 210Ah
	5HR 180Ah
Operating Temp. Range	Discharge -20~55°C (-4~131°F)
	Charge 0~40°C (32~104°F)
	Storage -15~40°C (5~104°F)



## APPLICATIONS

- Electric vehicle
- Golf cart
- Sightseeing
- Cleaning equipment
- AWP
- Mobility



Note: Terminal Torque Values in-lb(Nm):97.28-130.0(11-14.7)



# INCOMPARABLE DEEP CYCLE AGM BATTERY

## LDC8-210-GC8H (8V210Ah)



### GENERAL FEATURES

#### Stable initial capacity

- PAM/NAM amount optimization
- 4BS crystal paste mixing & curing technology
- Double layer separator technology
- Improved design electrolyte S.G.

#### Less water loss

- PAM/NAM amount optimization
- New PAM/NAM recipe introduced
- Rare earth alloy

#### Solve NAM sulphation

- Carbon boost technology
- Pre-sulfate technology

#### Improved PSoC cycling

- Carbon boost technology
- Mix carbon boost technology
- Targeting for higher level through carbon technology

#### Delay PAM softening and shedding

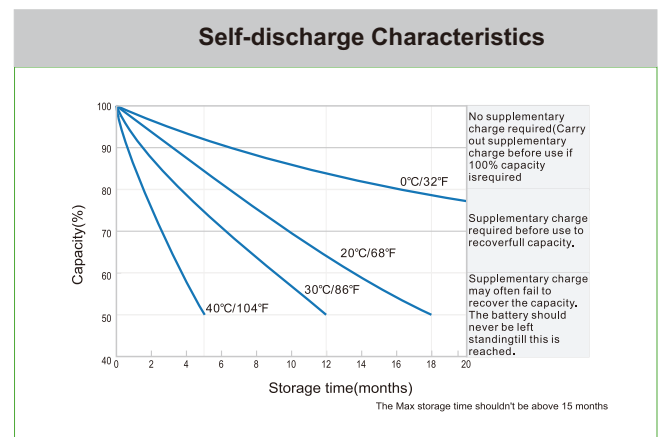
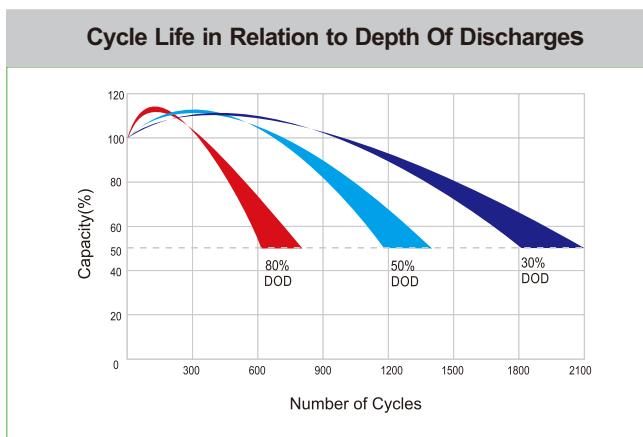
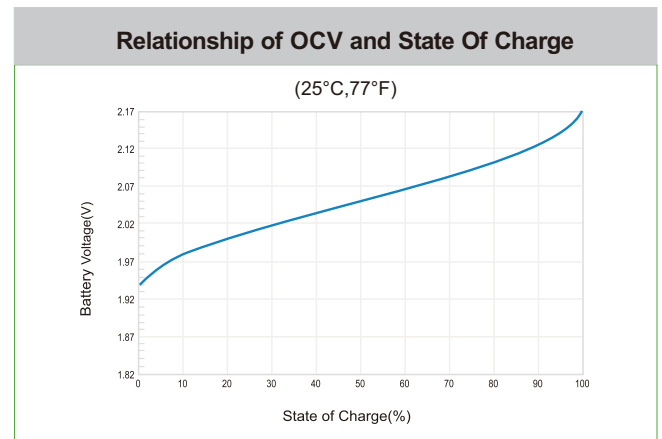
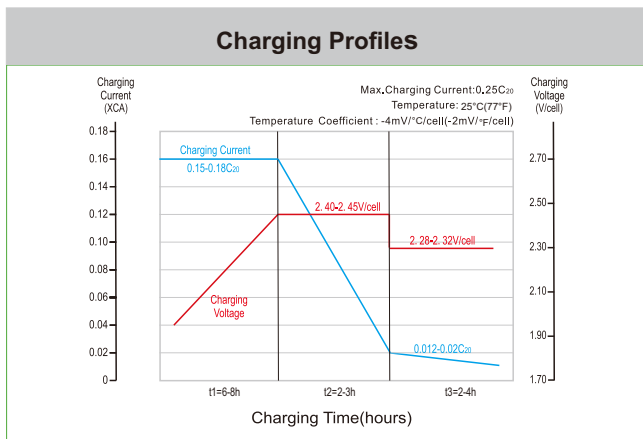
- Plate assembly pressure re-engineering
- 4BS crystal paste mixing & curing technology
- Higher paste density

#### Optimize electrolyte stratification

- Introduce AGM-GEL technology

#### Excellent deep cycle performance

- Plate assembly pressure re-engineering
- New PAM/NAM recipe introduced
- Gel electrolyte technology
- Rare earth alloy
- Double layer separator technology
- Lower acid filling temperature



Leoch International Technology Ltd.  
www.leoch.com

Leoch Batteries Pte Ltd  
www.leoch.sg

Leoch Battery Corporation  
www.leochamericas.com

Leoch Europe S.A.  
www.leoch.eu